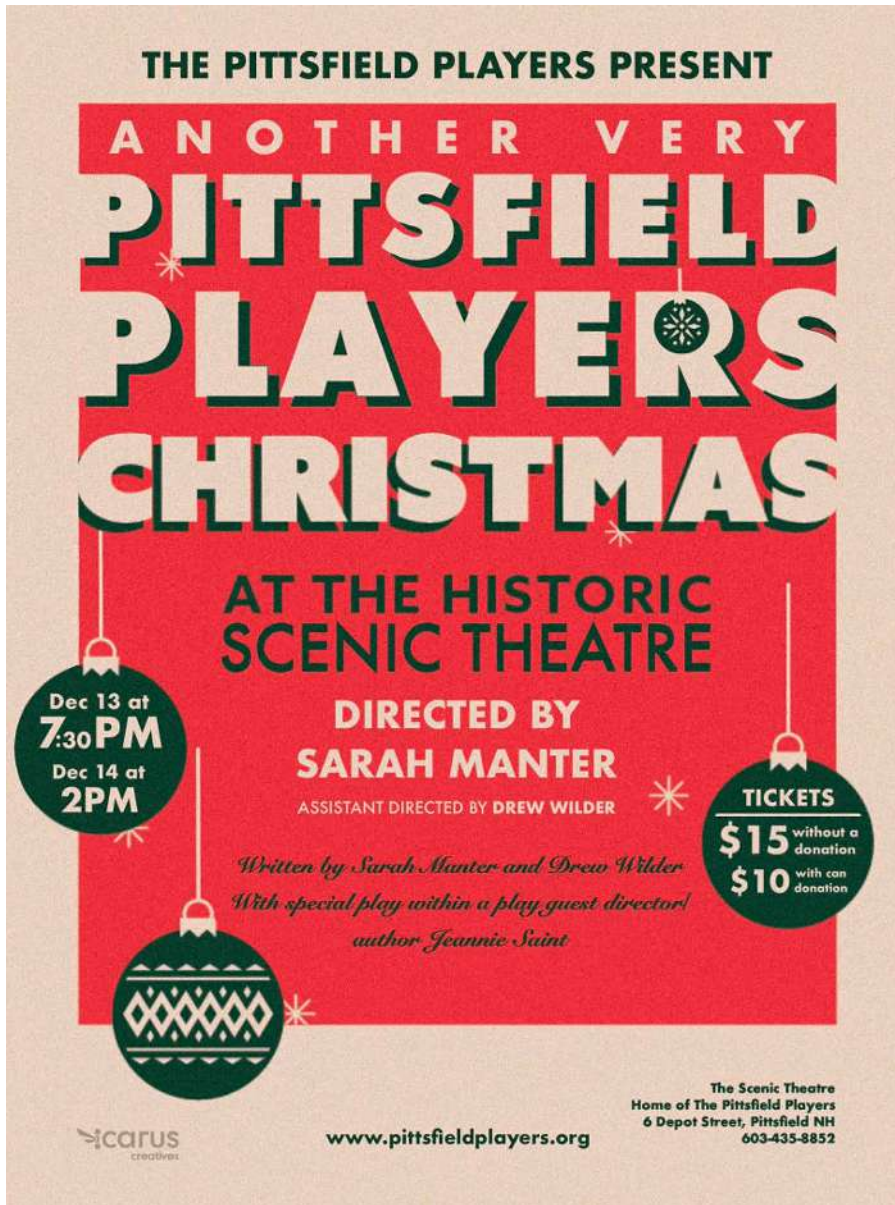


PITTSFIELD POST

A FREE NEWSLETTER BY COMMUNITY VOLUNTEERS

"To appreciate the beauty of a snowflake, it is necessary to stand out in the cold." - Artistotle

December 10, 2025



"Another Very Pittsfield Players Christmas!"

December 13 at 7pm, and December 14 at 2pm, at the Scenic Theatre in downtown Pittsfield.

Sarah Manter and Drew Wilder have written and created a Christmas Show fit for a King! And Queen! And Jesters! Your favorite Christmas Carols will be performed in royal fashion through song and dance. And smack dab in the middle of it will be a skit written by Jeannie Saint about "The Twelve Days of Christmas." This is bound to be a sweet and comical classic to remember. Grab the family and visit us at The Scenic Theatre on December 13 at 7:30pm, and December 14 at 2pm. Tickets are only \$10 with a donation to the Pittsfield Food Pantry, and \$15 without one. Tickets are sold online at www.pittsfieldplayers.org, over the phone at 603-435-8853, or at the door! 6 Depot Street, Pittsfield, NH.

Pittsfield Post Holiday Deadline

The deadline for our **12/24** issue is **9am, Wed, Dec. 17th**



Pittsfield Town Crier

Would you like an event listed? Contact Andi Riel at pittsfieldtowncrier@hotmail.com or 603-435-6346

Catamount Lodge #107 F&AM- Annual Christmas Tree Sale. Reasonably priced, Fresh cut NH grown trees. Fridays 5-7pm, Saturdays & Sundays 10am -7pm at Catamount Rd., Pittsfield, across from Family Dollar.

Wed, Dec 10, 5:30pm, - Budget Committee will meet at Pittsfield Town Hall.

two committee members still needed

Thurs, Dec 11, 5:30pm - Pittsfield Circle of Home & Family Group will meet for their annual Christmas party and potluck dinner at the Community Center, lower level. For information, contact Andi Riel at 603-451-8762.

Thurs, Dec 11, 5:30pm - PES PTO will meet at the PES Cafe.

Sat -Sun, Dec 13-14 - The Pittsfield Players present the annual holiday show "**Another Very Pittsfield Players Christmas**" on Sat, Dec. 13 at 7:30pm and Sun, Dec. 14 at 2pm, at the Scenic Theatre, 6 Depot St. Tickets will be \$15, or \$10 with a non-perishable food pantry donation. Food pantry donations will be gifted to the Pittsfield Food Pantry. Tickets will be available by phone reservation at 603-435-8852 or by visiting the website at www.pittsfieldplayers.org

Sat, Dec 13, 8:30am-9:30am - FREE Community Breakfast at Joy Church, 55 Barnstead Rd. All are welcome.

Sat, Dec 13, 10am-3pm - Journey's End Maple Holiday Open House, 205 Loudon Rd., Pittsfield. Join us for our annual Holiday Open House with vendors on site with a variety of treats, handmade wood gifts, holiday baskets and more. Maple shakes, Iced Maple Lattes, Maple Sundaes, and Maple Sap dogs available all day. Free hot chocolate and a treat for the kids.

Sun, Dec 14, 1-4pm – The Pittsfield Historical Society Museum, 4 Oak St. will be open to the public. Please stop in and view all the wonderful artifacts from Pittsfield's history!

Mon, Dec 15, 5:30pm-6:30pm – Community Supper at the First Congregational Church, Main St. Cost is by donation. Please join us for a delicious meal and a chance to visit with some new friends. Parking is available in the Chestnut St. lot at the back of the church.

Wed, Dec 17, 6:30pm – The Suncook Valley Rotary Club will meet at the Pittsfield Historical Society, 4 Oak St.

Thurs, Dec 18, 7pm – The Pittsfield Conservation Commission will meet at the Town Hall.

Thurs, Dec 18, 5:30pm – BCEP Solid Waste District - Public Hearing for the purpose of receiving comments on the 2026 proposed budget of the BCEP Solid Waste District will be held at the BCEP facility, 115 Laconia Rd, Pittsfield. The public from towns of Barnstead, Chichester, Epsom, and Pittsfield are encouraged to attend and participate. In the event of inclement weather, the meeting will be rescheduled to Friday, Dec. 19.

Fri, Dec 19 - The Greater Pittsfield Chamber of Commerce is sponsoring the **HOLIDAY HOUSE DECORATING Contest** again this year. All Pittsfield residents are invited to participate for a chance to win a \$100 Prize! There is no entry fee. **The deadline to register is Fri, Dec. 19** and judging will be on Mon, Dec. 22 starting at 7pm. To register, please call or text Louie Houle at 603-848-1553.

The Gabriel Douglas Anthony 21 Foundation was established by Gabe's family after his death to provide roadside safety equipment to all high school-aged drivers. Please visit the website <https://gda21foundation.org> to learn more about this wonderful foundation or, more importantly, to donate. You may also contact the foundation at GDA21 Foundation, 98 Main St., Pittsfield, NH 03263; 603-470-6927 or email gda21foundation@gmail.com

Senior Center Schedule - located in Joy Church - Monday/Thursdays – 8-2pm , Wednesdays 8am –1pm. Activities: Senior Community Lunch – M & TH 11:45am; Bingo - M, W & TH – 10-11:45am; Cribbage & Games – W-9-11am; Breakfast & Bingo - Wed 9am; Walking at the Center - M, W, TH- 8am-1pm; Sweatin' to the Oldies - Mon at 8-8:45am (New Time!);Chair Yoga -TH 9:30am (New Time). ?'s - call Anne 603-435-8482 Email: aalbers-reilly@capbm.org

The Pittsfield Youth Workshop (PYW), 18 Park Street is open for Drop-In Hours - Mon, Tues, Thurs, Fri from 3-6pm and Wed 1-6pm. The food pantry at PYW continues to be stocked with snacks, beverages, mealtime essentials, and basic toiletries/self care products for PYW youth - open during Drop-In hours. For more information, Zach Powers or Ashley Perron (603) 435-8272 or text at 603-234-9788.

Join us **every Saturday** for **BINGO hosted by Pittsfield Youth Baseball/Softball Association Bingo**. We have a great menu of food items along with games and it all benefits Pittsfield Youth for their baseball/softball program. Doors open at 3:30pm and bingo starts at 6 pm at Circle 9 Ranch in Epsom.

End 68 Hours of Hunger - *Volunteer drivers are needed.* End 68 Hours of Hunger - Pittsfield is looking for caring volunteers to deliver food to local youth on Thursdays from 9:30 -10:30am. Local delivery routes around Pittsfield. There is also a need for Food Packers (packing the food from shelves to the bags for delivery) on Thursdays from 9 -10am. For more information or to volunteer, please text or call Angela at 603-219-6343.

The Pittsfield Conservation Commission wants to hear from you! Please complete this anonymous survey to help us understand your joys, concerns and hopes regarding Pittsfield's natural spaces:
<https://forms.gle/zyyFqpiWGBShEehs6>

The 4-H Young Entrepreneurs now have Fresh Wreaths, Kissing Balls and Swags along with lots of other great holiday items available at Dowboro Farm, 615 Dowboro Rd. Hours are Wed-Sat, 9:30am-6:00pm and Sun, 10am-4pm.

The Nex Trex plastic recycling program will continue in our community and the **South Pittsfield Community Club** is currently managing the project. Please continue to save your plastic and bring it to one of the bins around town - (Bell Brothers Convenience Store, Danis Supermarket, Josiah Carpenter Library, Pittsfield Elementary School, Pittsfield Middle High School, Dowboro Farm Farmstand and Clark's Grain Store). The NexTrex recycling program challenges schools and non-profits to gather and track 1,000 pounds of recyclable plastics, "hopefully" to receive a free bench if the goal is reached within a 12 month period! ****Acceptable items**** include plastic grocery bags,

bread bags, bubble wrap, dry cleaning bags, newspaper sleeves, ziploc reclosable food storage bags, cereal bags, case overlap (such as case of bottled water), rock salt bags, pallet wrap, wood pellet bags, produce bags. Please make sure that these bags are empty. ****Unacceptable items**** Frozen food bags, chip bags, candy bar wrappers, net or mesh produce bags, pet food bags, pre-washed salad bags, hot dog or meat wrapping, six pack rings, gloves, masks.

Pittsfield Town Clerk/Tax Collector change in public office hours effective October 15, 2025**

Wednesdays closed all day to the public to meet administrative obligations. Modified Town Clerk/Tax Collector Public Hours: Monday 11:00am - 7:00pm, Tuesday 8am - 4pm, Wednesday - closed to public all day in order to meet administrative obligations, Thursday 7am - 4pm and Friday 8am - 4pm.

Pittsfield Historical Society's 2026 Calendar On Sale "Main Street: The North Side" - "Beginning at the dam site, we journey up Factory Hill to catch a glimpse of the businesses, shops, churches, and more that brought a flurry of activity to the small town, ending at the Tuttle Mansion." Calendars may be purchased at the Town Hall, Josiah Carpenter Library or the Pittsfield Historical Society Museum. The cost is \$15.

Happy Birthday wishes to Heather Davis and Jeff Miller on Mon, Dec 8; to Aunt Carolyn Davis and Eleanor Vien on Fri, Dec 19; to Rich Hillsgrove on Sat, Dec 20 and to my nephew, Tim Riel on Tues, Dec 23. I hope you all enjoy your special day.

Happy Anniversary wishes to Fred & Liz Hast on Thurs, Dec 18.

Advertising in the POST

Costs begin at \$4.00 for a brief classified ad.
Guidelines and order forms are located at
www.PittsfieldPost.org

The Post is Counting on You!

Dear Readers:

The *Post* needs your help to keep printing this weekly publication. When you're thinking about supporting our community, please send us a donation! **Thank you**, The *Post* Volunteers



Post-It in the Post
 Community groups, businesses,
 and individuals, please send us your
 news, opinions, and creative work!
 Deadline is 9 a.m. Friday.

Email: News@PittsfieldPost.org
 Info: www.PittsfieldPost.org

Gilmanton Community Church
Christmas Victorian Tea & Fair
December 13, 2025

Let the Merriment Begin!

Tea
&
Savories
11:00 - 2:00



Merry Christmas

FAIR
hours
9:00 - 2:00

Fresh Decorated Wreaths
Raffle Baskets Vendors
Christmas Altic Treasures

497 Province Rd, Gilmanton, NH

The Pittsfield Post
Deadline for 12/24 Edition will be
9am 12/17

Want to see the pictures in color?
 Subscribe to receive the Post by
 Email by scanning the QR code.
 Or to to www.PittsfieldPost.org



BCEP Solid Waste District

**Towns of Barnstead, Chichester, Epsom and
 Pittsfield**

NOTICE OF PUBLIC HEARING

There will be a Public Hearing for the purpose of
 receiving comments on the 2026 proposed
 budget of the BCEP Solid Waste District on
Thursday, December 18, 2025
 at the BCEP Facility
 115 Laconia Road, Pittsfield, NH 03263
 at 5:30pm.

The Public is encouraged to attend and
 participate in the event.

**In the event of inclement weather, the meeting
 will be rescheduled to Friday, December 19,
 2025.**

NOTICE OF PUBLIC HEARING

Budget Committee 2026 Budget Hearing

The Pittsfield Budget Committee will hold a
 public hearing on the 2026 municipal & school
 budgets on Wednesday, January 14, 2026, at
 7pm. in the Lecture Hall of the Pittsfield Middle
 High School, 23 Oneida Street, Pittsfield, NH,
 03263.

The snow date for this meeting will be Thursday,
 January 15, 2026 – same start time and location.

**TOWN OF PITTSFIELD
 BUDGET COMMITTEE
 Town Hall, 85 Main Street
 Pittsfield, New Hampshire 03263**



Cooks Corner -- Hot Chocolate Icebox Cake

Here's a scrumptious sweet treat that is guaranteed to bring smiles and make your holidays extra festive. And it's a good thing this is easy to make, because you may need to make two! Enjoy!

1 baked pie crust (homemade or frozen)

¼ cup cocoa powder

½ tsp kosher or coarse salt

3 cups heavy cream, divided

8 ounces milk chocolate, chopped

1 TBSP sugar

1 TBSP vanilla extract

1 cup marshmallow cream (such as Fluff)

Chocolate curls & mini marshmallows for garnish

Roll out pie crust dough, place in pie plate, and bake as usual. If using frozen, cook according to package directions.

Meanwhile, whisk together cocoa, salt and ½ cup heavy cream in a small saucepan. Cook over medium heat, whisking until smooth, about 1 to 2 minutes. Melt chocolate in the microwave, stirring every 30 seconds, until melted and smooth, about 1 minute total. Whisk the cocoa mixture into the melted chocolate until smooth.

Whisk sugar, vanilla and 1 & ½ cups heavy cream with an electric mixer at medium-high speed until soft peaks form, about 1 minute. Whisk about ¼ cup of the whipped cream into the melted chocolate mixture and stir well, then fold in the rest of the whipped cream mixture. Spoon this into the prepared pie shell. Refrigerate, uncovered, until set, minimum 2 hours. Pie can be refrigerated at this point for up to a full day.

Beat marshmallow cream and remaining 1 cup heavy cream with an electric mixer on medium-high speed until soft peaks form, 1 minute. Carefully spoon this mixture on top of the pie. Garnish pie with chocolate curls and mini marshmallows.

For chocolate curls, melt chocolate in the microwave, then pour in a thin layer onto a baking sheet lined with parchment paper. Once the chocolate has hardened, use the edge of an offset spatula to scrape off, creating curls.



MATRAS SMALL ENGINE REPAIR

TUNE-UPS, REBUILDS, REPAIRS

MOWERS, SNOWBLOWERS, GENERATORS,
TILLERS, SAWS, ETC

ASA MATRAS

821 CATAMOUNT RD PITTSFIELD NH 03263
HOME 603-435-8214 CELL 603-312-6909

PICKUP / DELIVERY AVAILABLE

Business Cards • Forms • Business Checks • Brochures
Color Copies • Stationery • Graphic Design • Magnets
Programs • Raffle Tickets • Rubber Stamps
Wedding Invitations and Accessories • Bookmarks

Full Color: Cards • Brochures • Flyers • Labels • Postcards
Customized Promotional Items • Banners • Yard Signs

GRANITE IMAGE

940 Suncook Valley Hwy • PO Box 683
Epsom, NH 03234 • 603-736-6056
print@granite-image.com • www.granite-image.com

Presented by the Greater
Pittsfield Chamber of Commerce

House Decorating CONTEST

LET'S "LIGHT UP"
PITTSFIELD!!

All Pittsfield Residents Are Invited To Participate

NO ENTRY FEE - \$100 PRIZE

Judging Dec. 22 at 7pm

Deadline to Register is Fri., Dec. 19

To Register
call or text Louie Houle at
603-848-1553



Get in the Holiday Spirit

The Josiah Carpenter Library's next StoryWalk® features *The Grumpy Reindeer* as he finds Santa's lost list of children's wishes, transforms from a grumpy reindeer to a four-legged friend filled with joy and laughter, and embraces the true spirit of Christmas. This story is now available for your viewing pleasure. Book pages have been mounted in windows throughout the downtown area. Tie up your walking shoes, put on your mittens and enjoy a stroll through our beautiful little town. Families can pick up a map from the mailbox that is attached to the community bulletin board at Dustin's Park. As you return to the library on Main Street to read the last page of the book, stop in to pick up your FREE GIFT!

For more books to get you in the Holiday Spirit, visit the library Mondays and Thursdays from 10-6, Tuesdays and Wednesdays 12:30-6 and Saturdays 10-2 !

Christmas Eve Candlelight Service

Join your friends and neighbors and bring the whole family to a wonderful traditional candlelight service Wednesday, Christmas Eve, 7 p.m., at the First Congregational Church, 24 Main Street, Pittsfield.

The service includes beautiful music by the Chancel Choir and the JuBellation Handbell Choir, carols, scripture lessons, the story of the first Christmas, the sanctuary shimmering in candlelight and the singing of "Silent Night." Include this lovely evening service in your holiday plans.

Parking and wheelchair access are available at the rear of the church at Chestnut Street. Additional parking is available at the Historical Society in unreserved spots. For more information, call the church office at 603 435-7471 and speak with Pastor Dennis Russell.